

SensioPod Vertical Powerdock

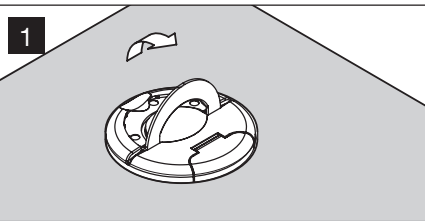
- Ideal for kitchens, offices, hotel rooms, dorm rooms, etc.
- Includes an On/Off switch
- Two USB sockets
- Three power sockets, 120V
- IP54 Rated- splash proof in retracted position
- 13 1/4" space required above surface; 14 1/2" required below
- Requires a Ø90 - Ø92 mm (Ø3 9/16" - Ø3 5/8") hole for installation
- Power cord length: 8'

Material: Plastic

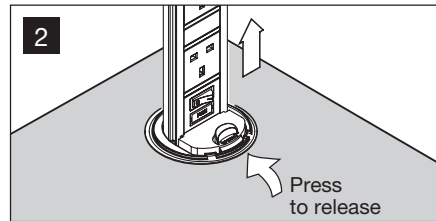
Color	Item No.
black & aluminum with chrome top	822.82.930
black & aluminum with black top	822.82.330

Note

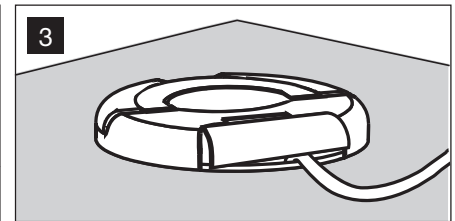
To use SensioPod in a kitchen or bathroom countertop application, plug power cord into a GFCI (ground fault circuit interrupter) outlet



1 To use the Pop-up socket, gently lift up the handle on the top cover until all socket outlets are exposed and the green stop/release button clicks and locks in place.



2 Press the master switch on. A green light confirms that the power is available. You can use all power sockets. The unit can be retracted in position by pressing the green stop/release button and pushing the unit down until it's flush with the surface, leaving the engaged cables on the window of the top cover.



3 Insert SensioPod into the hole to discreetly hide away when not in use.

Dimensional data not binding. We reserve the right to alter specifications without notice.